

FS-FHSS Wireless Simultaneous Interpretation System

GONSIN®
Delivering Trust & Value



FS-FHSS Wireless Simultaneous Interpretation System

FS-FHSS wireless simultaneous interpretation system utilize digital wireless communication and Gonsin innovated FS-FHSS(Frequency Selecting - Frequency Hopping Spread Spectrum) technology. It comes with super-strong anti-interference capability and broad bandwidth, provides perfect CD-level audio quality, and utilizes AES technique to encrypt data. Effective communication distance is 50~500m. Signals can be transmitted out in all directions. Eight channel is configured with one antenna unit, which reduces deployment difficulty and saves system investment. The system is able to modulate and transmit up to 16 channels at the same time, allowing participants to select a channel to hear the required language so long as he/she has a handheld or headset receiver.

* FS-FHSS(Frequency Selection –Frequency Hopping Spread Spectrum) technology:

Frequency hopping communication technology is a common spread spectrum communication technology which is widely applied to various wireless communication fields. GONSIN has developed the unique FS-FHSS based on this communication technology. The new technology can monitor and select the undisturbed frequency band. FS-FHSS ensures the stability of the communication. It is applied to GONSIN wireless conference system, which implements the discussion, simultaneous interpretation, voting and others comprehensive conference application functions.

◆ Features

- ◆ Gonsin innovated FS-FHSS (Frequency Selecting-Frequency Hopping Spread Spectrum) technology
- ◆ Highly flexible for conference places, suits various conference places including outdoor/ indoor/ temporary/fixed conference place
- ◆ AES for data encryption, preventing malicious interference and listening
- ◆ Super-strong anti-interference capability, being immune to any light source, wireless communication equipment, and signal jammer
- ◆ Adjustable transmission power, the effective communication distance could reach from 50m to 500m.
- ◆ Unlimited system capacity within the effective transmission scope, suitable for small/medium/large/super-large conferences
- ◆ All-direction transmission, allowing participants to move within the effective transmission scope
- ◆ Max number of simultaneous interpretation channels in one system: 8; in support of cascading, max number of simultaneous interpretation channels: 16
- ◆ Simultaneous interpretation server GONSIN30000I could be connected to DCS-3021 wireless discussion terminal to extend conference discussion function.
- ◆ One system just requires one wireless access point, which makes the deployment simple and applicable.

Wireless Simultaneous Interpretation Receiver

TC-FSJ04B/08B/12B/16B



Basic functions

- ◆ GONSIN innovated FS-FHSS technology
- ◆ CD-level sound quality
- ◆ HOST ID setting by manually or automatic upgrading, support Auto-tracking by Host ID
- ◆ Support up to 16 channels(max.1 floor+15 interpretation audio)
- ◆ LED display, human-oriented human-machine interaction
- ◆ Lithium battery/AAA battery
- ◆ Real-time battery level detection and display, low battery alarm
- ◆ Grouping (encryption) function; max number of groups: 255; no interference between the groups
- ◆ Dynamic display of such information as signal strength, battery capacity, and selected channel on the OLED screen
- ◆ Signal received from all directions
- ◆ Support unified shut-down function, reduce workload greatly
- ◆ Lightweight receiver; in combination with a headphone to allow users to hear an interpreter
- ◆ Max number of channels: 16; Four models optional:4/8/12/16 channels
- ◆ Clear voice along different independent channels
- ◆ Volume and audio channel is adjustable by key pressing
- ◆ Low power consumption, allowing battery to consecutively run for 16 hours
- ◆ Automatic turn-off function when no signal is receiving for 10 minutes, unified server shutdown function;
- ◆ Earphone detection, receivers will auto shut-down if without earphone after 2 minutes
- ◆ Number of receivers within the signal coverage area is unlimited;
- ◆ Allow users to move within the signal coverage area
- ◆ Earphone (single- or double-side) and headphone for selection
- ◆ Centralized charging by the charging case, 60 receivers can be charged by one charging case.

◆ Technical Parameters

| | |
|----------------------|--|
| Modulation mode | FS-FHSS technology |
| Frequency range | 2.4-2.5GHz |
| Encryption method | AES |
| System Max capacity | Unlimited receivers within signal distance |
| Grouping function | up to 255 groups |
| Sensitivity | -121 dBm |
| Earphone jack | 3.5mm jack stereo |
| OLED screen | 35×10mm |
| Battery display | real-time display, low power alarm |
| Battery | lithium battery/ 2 AA batteries |
| Battery service time | 16 hours(different AA batteries have different results) |
| Package | portable aluminum case |
| Dimension(L×W×H) | 136×50×21mm |
| Weight | 136g (with a lithium battery) 94g (without battery) |
| Working temperature | 0~45°C |
| Storage temperature | -20~50°C |



Wireless Simultaneous Interpretation Receiver

TC-RFJ04S/08S/12S/16S



TC-RF J04S/08S/12S/16S wireless simultaneous receiver serves to receive audio signal. Participant use the receiver to select a required audio channel and wear a headphone to hear interpretation. Volume is adjustable. Signal strength, battery capacity, selected channel, etc can be displayed on the LCD screen.

Basic functions

- ◆ Gonsin innovated FS-FHSS technology
- ◆ CD-level sound quality
- ◆ Grouping(encryption) function, no interference between groups
- ◆ Dynamic display of sorts of information e.g. signal strength, battery capacity, and selected channel on the LCD screen
- ◆ Low power consumption, allowing battery to consecutively run for 16 hours
- ◆ Chargable lithium battery(3.7V)
- ◆ Signal received from all directions
- ◆ Lightweight receiver; in combination with a headphone to allow users to hear interpretation
- ◆ Audio channel selection by key pressing
- ◆ Max number of channels: 16
- ◆ Clear voice along different independent channels
- ◆ Volume is adjustable
- ◆ Number of receivers within the signal coverage area is unlimited
- ◆ Allow users to move within the signal coverage area
- ◆ Earphone (single- or double-side) and headphone for selection
- ◆ Exquisite lanyard for hanging the receiver before your chest or inside your pocket

◆ Technical Parameters

| | |
|-----------------------------|-----------------------|
| Modulation mode | FS-FHSS |
| Frequency range | 2.4-2.5GHz |
| Encryption mode | AES |
| Grouping function | 255 groups |
| Headpone Jack | 3.5mm jack |
| Rechargeable Li-ion battery | 3.7V lithium battery |
| Service time | 16 Hours |
| LCD screen | 30mm × 10mm |
| Dimension (H×W×D) | 100×52×18 mm |
| Weight | 0.1kg |
| Operating temperature | 0~45°C |
| Storage temperature | -20~50°C |
| Packaging | aluminum portable box |



◆ Wireless Simultaneous Interpretation Access Point

WAP-30I

◆ Basic functions

- ◆ Gonsin innovated FS-FHSS technology
- ◆ Strong signal, stable communication
- ◆ No interference if multiple systems are used at the same time
- ◆ Wireless signal transmission within FS-FHSS simultaneous interpretation system
- ◆ Indicator to show the working status
- ◆ Power is supplied via the server
- ◆ In support of wall mounting, racking installation, ceiling mounting, etc



◆ Technical Parameters

| | |
|---------------------|--|
| Frequency range | 2.4~2.5 GHz |
| Interfaces | One 6 pin cable interface to connect the server One 6 pin cable to cascade the simultaneous interpretation access point |
| Power supply | DC24V |
| Effective distance | 50~500m (straight-line distance) |
| Dimension | 260×260×68mm |
| Weight | 1.2 kg |
| Working temperature | 0~45°C |
| Storage temperature | -20~50°C |



Server GONSIN30000I



Basic functions

- ◆ FS-FHSS(Frequency Selecting - Frequency Hopping Spread Spectrum)innovated by GONSIN, stable and reliable system performance
- ◆ High-efficient digital audio lossless compression technology improves wireless carrier utilization rate, and avoids interference if multiple systems are used within the same building
- ◆ Dynamic display of operational information of the server with OLED display panel
- ◆ Unified server shutdown function for headset receiver/conference terminal
- ◆ Compact 1U rack design, simple deployment
- ◆ Allows the server to auto-detect available 2.4GHz RF; when working with supporting software, the server adopts a reliable hopping mechanism to avoid co-channel interference.
- ◆ Set Host ID of the server by the LCD panel for receiver grouping management.
- ◆ The system is compatible with the terminal of digital interpreter and simulative interpreter, can fit with the chosen interpreter terminal in accordance with need of the user.
- ◆ Unified server shutdown function for headset receiver/conference terminal .

With DCS-3021 wireless conference terminal, GONSIN30000I server can realize functions below:

- ◆ Support 8×1 SD /8×8 HD automatic camera tracking by video switching matrix
- ◆ AUTO and FIFO microphone modes;
- ◆ Max four microphones can be activated at the same time (1 chairman terminal and 1/2/3 delegate terminals);
- ◆ Volume/tone adjustable;
- ◆ ID number writing available, to facilitate terminal management;

◆ Technical Specifications

| | |
|------------------------|--|
| Max Capacity of System | Unlimited simultaneous interpreter receivers(within signal distance); Max number of conference terminals: 500 (within signal distance) |
| Frequency response | 30Hz~16KHz |
| Signal to noise ratio | ≥95 dB (A-weighting) |
| Distortion | ≤ 0.5% (total harmonic distortion: 50Hz~8KHz) |
| Max. audio output | LINE OUT: +20dBu eight-pin socket x 1 (for connecting to WAP device) balanced audio output (XLR connector) x 1 non-balanced audio output (RCA connector) x 2 |
| Interfaces | RJ-45 interface x 1 (for connecting to PC) RS-232 interface x 1 (for controlling camera tracking video matrix) RS-485 bus interfaces x 1 group (for controlling cameras) |
| Power supply | AC110/220V±10%, 50~60Hz |
| Enclosure | 19-inch standard cabinet |
| Dimensions | 1U (340mm×420mm×45mm) |
| Weight | 4 kg |
| Working temperature | 0~45°C |
| Storage temperature | -20~50°C |





Simultaneous Interpretation Audio Converter

U-BOX08A/08B



Simultaneous interpretation audio converter is a GONSIN self-developed product. With this device, GONSIN FS-FHSS simultaneous interpretation system, IR simultaneous interpretation system and wired simultaneous interpretation system can be connected seamlessly, and compatible with other brands' simultaneous interpretation systems, which forms a new large various complete solution of interpretation systems, saves customers'investment in expanding the current system and ensures a stable performance without affecting on product functions and sound quality.



Basic Functions

- ◆ High compatibility, realize the interconnection and communication between multiple simultaneous interpretation systems(including other brands) to form a large scale system.
- ◆ Easy to extend, supporting output and input of simultaneous interpretation system
- ◆ Flexible interface, supporting signal converting between DB25 audio interface and other interfaces
- ◆ Connecting the interpreter console to simultaneous interpretation server to realize interconnection among multiple simultaneous interpretation systems, including GONSIN equipments and other brands'.
- ◆ 3 channels of DB25 audio interfaces and 8 channels of phoenix terminal interfaces, signal is converted from different interfaces for compatible use
- ◆ Support 8 channels of audio output to meet the demand of audio recording, press release, live video broadcast and other applications.
- ◆ Support 8 channels of audio input, can be connect to the external line-in audio to realize interconnection among multiple simultaneous interpretation systems
- ◆ Support DB25 cable hand-in-hand connection, to realize 16 channels of simultaneous interpretation



Technical Specifications

| | |
|------------------------|--------------------------------------|
| Power supply | 24V, powered by central control unit |
| Channel number | 8 |
| Interfaces | 2 DB25 Male interfaces |
| | 1 DB25 Female interface |
| | 8 groups of phoenix terminals |
| Dimensions(L x W x H) | 200mm×185mm×30mm |
| Weight | 590g |
| Operating temperature | 0 ~ 45℃ |
| Storage temperature | -20~50℃ |

◆ Interpreter Console

TC-F06/16

Interpreter Console is an indispensable part of simultaneous interpretation system, which is used for simultaneous translation of conference speeches by interpreters. When using, the interpreter can only connect the interpreter console with the simultaneous interpreting main control unit / discussion main control unit, and the translated speech can be transmitted to the main control unit through the interpreter unit. Through the processing and transmission by the system, the participants can listen to the speech content of various languages through the receiving unit / discussion unit. There are two types of the interpreter console Interpreter Console, which support 6 to 16 languages simultaneous interpretation.

◆ Basic Functions

- ◆ Support up to 6/16 channels simultaneous interpretation
- ◆ LCD screen can display various information
- ◆ Support direct interpretation and relay interpretation
- ◆ Support dual microphone translation in turn
- ◆ With microphone selection function
- ◆ 3 output volume levels adjustable
- ◆ Interpretation timing function
- ◆ Speaking speed remind function
- ◆ Pluggable dual soft tubes gooseneck microphone stem



◆ Basic Functions

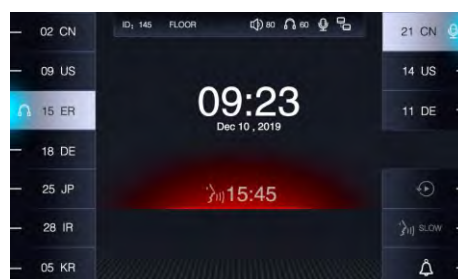
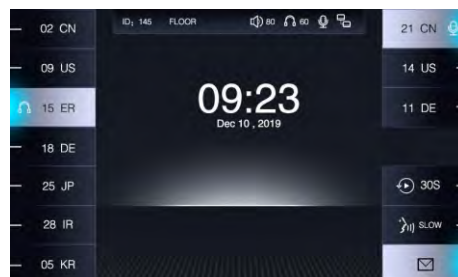
- ◆ In compliance with IEC60914 international standard
- ◆ The design of physical buttons / knobs are sensitive with good touch, with long service life and without mechanical button sound
- ◆ It adopts 25P parallel port (1 male and 1 female) cable for hand-in-hand connection
- ◆ Automatic restoration function: supports hot plug
- ◆ Support 16 channels simultaneous interpretation(including the floor channel)
- ◆ Support direct interpretation and relay interpretation
- ◆ High brightness 128×64 graphic LCD screen with backlight: display setting information ,input and output channel information
- ◆ With channel selection button, it is convenient to select the language from all the input language channels
- ◆ With the indicator of FLOOR/RELAY input channel
- ◆ 3 input channels can be preset with corresponding shortcut button and input channel occupancy indicator
- ◆ 2 output channels can be preset with corresponding shortcut buttons. When all interpreter consoles are closed, the output channel can automatically switch to the floor channel
- ◆ Standard cardioid directional electret microphone with indicator ring; multiple soft gooseneck microphone stems can be selected (standard: 410mm, optional:310mm/510mm)
- ◆ Pluggable microphone stem; During the meeting recess, it can be disassembled for equipment maintenance.

- ◆ Built-in 2W loudspeaker with volume switch; Can play the floor channel or interpreted channel language
- ◆ With the same channel interlock function, when the output channel is preset, the occupied channel will skip automatically.
- ◆ MUTE key to enable a brief muting of the microphone for cough cut
- ◆ Speaking speed remind function, the interpreter can press the "slow" key to remind the speaker to slow down the speaking speed (The microphone's indicator ring or screen will flash)
- ◆ Left and right headphone output jack (3.5 mm×2), connect the headset to listen to the floor or interpreted channel language, with left and right selection buttons; headphone volume is adjustable
- ◆ Left and right microphone input jack (3.5 mm×2), can be connected to external microphone, with left and right selection buttons, to meet different usage scenarios
- ◆ Left and right recording output jack (3.5 mm×2), can be connected to recording device, with left and right selection buttons, the output audio depends on the channel listened by the interpreter console
- ◆ Highly resistant to mobile phone interference
- ◆ Interpretation timing function (timing unit: hour/minute)

◆ Technical Specifications

| | |
|------------------------|---|
| Installation Way | Desktop |
| Connection Way | Specialized 25 core connector |
| | Size: 65mm × 32mm |
| Display Specifications | Lattice: 128 × 64 |
| | Backlight: blue background white characters |
| Frequency Range | 20Hz~20KHz |
| Sensitivity | -46 dBV/Pa |
| Equivalent Noise Level | 20dBA(SPL) |
| Max. SPL | 125dB(THD<3%) |
| THD | <0.05% |
| SNR | ≥96dB |
| Microphone Type | Cardioid directional electret |
| Directivity | 0°/180°: >20 dB (1 kHz) |
| MIC Stem Length | 410mm (standard); 310mm/510mm (optional) |
| Input Impedance | 2KΩ |
| Headphone Output Jack | 3.5 mm jack×2 |
| Microphone Input Jack | 3.5 mm jack×2 |
| Recording Output Jack | 3.5 mm jack×2 |
| Headphone Load | >16Ω |
| Headphone Volume | 10mW |
| Built-in Loudspeaker | 2W/8Ω |
| Channel Number | 6/16 channel (including the floor channel) |
| Power supply | 24V |
| Max. Power Consumption | <5W |
| Dimensions(L×W×H) | 247mm×145mm×95mm(Not including the stem) |
| Net weight | 1.2Kg |
| Working Temperature | 0~45°C |
| Storage Temperature | -20~50°C |

◆ Interpreter Console IC-2032N



◆ Basic Functions

- ◆ In compliance with IEC60914 international standard
- ◆ The design of physical buttons / knobs is reasonable , which is easy to operate; The buttons / knobs are sensitive with good touch, accurate operation response, long service life and without mechanical button sound
- ◆ With fully digital audio technology, built-in high-speed CPU
- ◆ Interpreter console, conference terminal, power HUB and conference server are all connected by network cables. Flexible cabling reduces project workload and makes large-scale construction projects easier.
- ◆ It supports hand-in-hand connection, star connection and mixed connection. The system is highly stable and reliable. The breakdown of one terminal won't influence the other terminals , and the malfunction of one terminal cabling will not affect the whole system, ensuring the system stability.
- ◆ Automatic restoration function: supports hot plug
- ◆ Supports 48KHz audio sampling freq, acoustic frequency response can be up to 20Hz to 20KHz.
- ◆ Built-in high-performance digital audio processor(DSP), helpful to remove the useless low frequency and avoid low-frequency acoustical shock, which is better to improve the clarity of sound.
- ◆ Support 32 channels simultaneous interpretation(including the floor channel)
- ◆ Support direct interpretation and relay interpretation
- ◆ 7-inch TFT LCD screen to display setting information ,input and output channel information
- ◆ With channel selection button, long press to quickly increase / decrease the channel, short press to increase / decrease the channel, convenient to select channels
- ◆ 7 input channels can be preset, with corresponding shortcut keys and input channel occupation indicator
- ◆ 3 output channels can be preset , with corresponding shortcut keys. When all interpreter consoles are closed, the output channel can be automatically switched to the floor channel
- ◆ Standard cardioid directional electret microphone with indicator ring (On or Off) . Multiple soft gooseneck microphone stems can be selected (standard: 410mm, optional:310mm/510mm).
- ◆ Pluggable microphone stem; During the meeting recess, it can be disassembled for equipment maintenance.
- ◆ Built-in 2W loudspeaker with volume switch; Can play the floor channel or interpreted channel language
- ◆ With the same channel interlock function, when the output channel is preset, the occupied channel will skip automatically. Channel output can be set to interlock mode and free mode

- ◆ The number of interpreter console in the same room is not limited.
- ◆ Through software setting, multiple interpreter consoles can be set up in a single language channel. When the interpreter console in the same language channel turns on the microphone, the microphone of the previous interpreter terminal will be automatically turned off.
- ◆ MUTE key to enable a brief muting of the microphone for cough cut
- ◆ Speaking Speed remind function, the interpreter can press the "slow" key to remind the speaker to slow down the speaking speed (The microphone's indicator ring or screen will flash)
- ◆ Left and right headphone output jack (3.5 mm×2), connect the headset to listen to the floor or interpreted channel language, with left and right selection buttons; headphone volume is adjustable
- ◆ Left and right microphone input jack (3.5 mm×2), can be connected to external microphone, with left and right selection buttons, to meet different usage scenarios
- ◆ Left and right recording output jack (3.5 mm×2), can be connected to recording device, with left and right selection buttons, the output audio depends on the channel listened by the interpreter console
- ◆ With message function, text message can be sent to interpreter terminal through management software
- ◆ With call service function, interpreters can call the administrator to provide help through the interpreter console
- ◆ Setting the interpreter console information can be locked by password, and the interpreter can use the setting function through password and IC card
- ◆ No need independent system connection, it can be mixed connected with all conference terminals
- ◆ Highly resistant to mobile phone interference
- ◆ Every interpreter comes with an unique serial number and the conference system supports automatically or manually assigning ID to the corresponding equipment.
- ◆ Interpretation timing function (timing unit: hour/minute)

◆ Technical Specifications

| | |
|------------------------|--|
| Installation Way | Desktop |
| Connection Way | Network Cable |
| Display Specifications | 7-inch TFT color display |
| Frequency Range | 20Hz~20KHz |
| Sensitivity | -46 dBV/Pa |
| Equivalent Noise Level | 20dBA(SPL) |
| Max. SPL | 125dB(THD<3%) |
| THD | <0.05% |
| SNR | ≥96dB |
| Microphone Type | Cardioid directional electret |
| Directivity | 0°/180°: >20 dB (1 kHz) |
| MIC Stem Length | 410mm (standard); 310mm/510mm (optional) |
| Input Impedance | 2KΩ |
| Headphone Output Jack | 3.5 mm jack×2 |
| Microphone Input Jack | 3.5 mm jack×2 |
| Headphone Load | >16Ω |
| Headphone Volume | 10mW |
| Built-in Loudspeaker | 2W/8Ω |
| Channel Number | 32 channel (including the floor channel) |
| Power supply | 24V |
| Max. Power Consumption | 7W |
| Working Temperature | 0~45°C |
| Storage Temperature | -20~50°C |

Audio Extender DCS-AE10



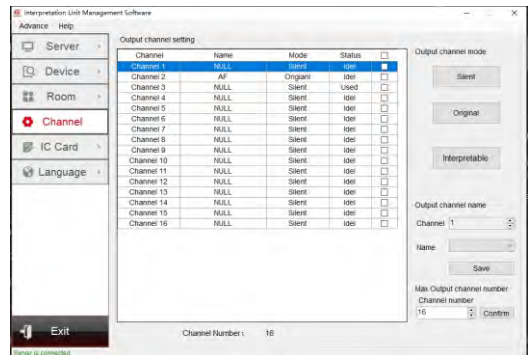
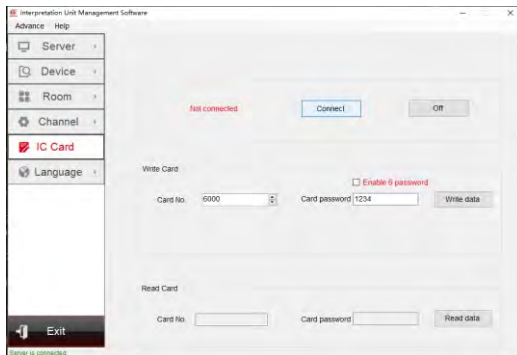
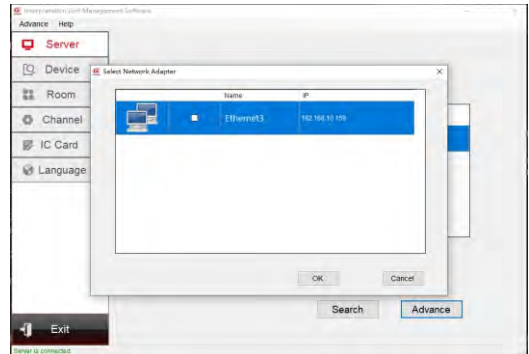
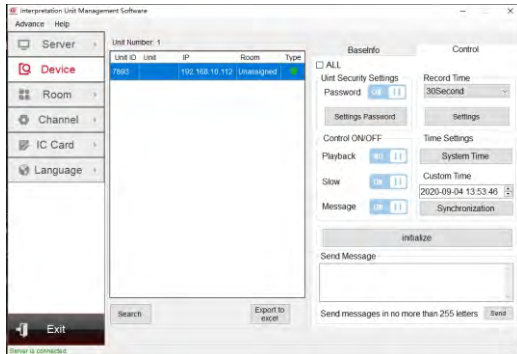
Basic Functions

- It can realize the conversion of D/A.
- The number of channels of a single audio extender is 10, and it can be cascaded up to 32 channels.
- Support the independent or unified setting of DA/AD mode for each channel, and the mode status of each channel can be viewed through the OLED panel.
- Through the DA mode, the digital audio of the GONSIN10000N system can be output to the FS-FHSS wireless simultaneous interpretation and IR simultaneous interpretation system to achieve system expansion.
- Through AD mode, FS-FHSS wireless simultaneous interpretation, IR simultaneous interpretation system, and other analog audio signals can be input into the GONSIN10000N system to achieve unified system management.
- The AD mode can be used to convert analog audio into digital audio to meet the cascading use of the analog audio discussion system and the intelligent ASR system, to expand the voice transcription function.
- 2 audio extenders cooperate to realize 10-channel audio long-distance transmission
- Support host/slave working mode.
- In the host working mode, it can manage digital interpreter terminals, and can access to the digital interpreter terminal to meet the requirements of digital translation room management with FS-FHSS wireless simultaneous interpretation system and IR simultaneous interpretation system.
- In the slave working mode, it needs to be used with the GONSIN10000N server, which manage the digital translation room. Applied to occasions where GONSIN10000N server is used simultaneously with other simultaneous interpretation systems.
- The electrical level of each channel can be adjusted independently or uniformly through the panel knob.

Technical Specifications

| | |
|---------------------------|----------------------------------|
| Audio frequency response | 20Hz~20kHz |
| SNR | >96 dBA |
| Channel isolation | >85 dB |
| Total harmonic distortion | <0.05% |
| Audio interface | 11 groups of lotus interfaces |
| Display | OLED (61mm×37mm) |
| Working temperature | -0~45°C |
| Storage temperature | -20~50°C |
| Dimensions (L×W×H) | 485×325×90mm |
| Installation | desktop or use 19 inches cabinet |
| Weight | 8kg |

Interpreter Console Management System V2.1.0



Basic Functions

- ◆ Support interpreter console online search and numbering
- ◆ Numbering the interpreter console corresponding with interpretation room; the number of interpreter consoles in the same interpretation room is not limited
- ◆ Support name setting for the interpreted channel and corresponding language
- ◆ Support interpreter console locking mode, including password locking and IC card locking
- ◆ Support interpreter console to set SOLW function permissions
- ◆ Support interpreter console call service function(on / off)
- ◆ Support interpreter console playback function, turn on (5/10/15/30 seconds)/turn off setting
- ◆ Support the setting of the output channel after the microphone is turned off; can choose mute or monitor output
- ◆ Support interpreter console date and time synchronization
- ◆ Support 32 effective channels

Charging Case

GX-60/60B/60C

Features

- ◆ Intelligent charging management
- ◆ Independent LED indicators for charging status
- ◆ Portable aluminum storage case
- ◆ Anti-misplug design for charging port



Basic Functions

- ◆ Aluminum storage flight case for charging & storage
- ◆ Accommodates up to 60 units
- ◆ Independent management for each charging port, it will automatically charge the unit with low battery, it will stop charging if the unit is fully charged to ensure the security
- ◆ Independent LED indicators for charging status
- ◆ Charging time: 2.5 hours
- ◆ Anti-misplug design for charging port
- ◆ GX-60 is suitable for charging IR simultaneous interpretation system receivers
- ◆ GX-60B is suitable for charging TC-FSJ04/08/12/16 wireless simultaneous interpretation receivers, BJ-W5 voting units and BJ-W5I voting and interpretation units
- ◆ GX-60C is suitable for charging TC-FSJ04B/08B/12B/16B wireless simultaneous interpretation receivers.

Technical Specifications

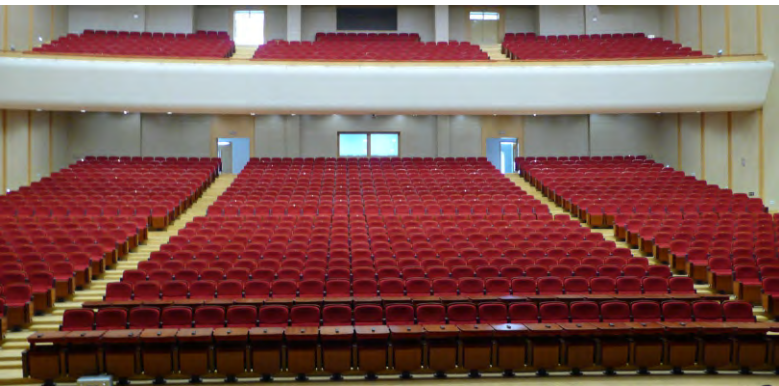
| | |
|-----------------------|----------------------|
| Power input | AC100V~240V, 50/60Hz |
| Capacity | 60 units |
| Charging time | 2.5 hours |
| Charging indicator | LED indicator |
| Dimension (L*W*H) | 680mm×430mm×245mm |
| Weight | 11 Kg |
| Operating temperature | 0~45°C |
| Storage temperature | -20~50°C |





Charging Case

GX-20S



Features

- ◆ Intelligent charging management
- ◆ Independent LED indicators for charging status
- ◆ Portable aluminum storage case
- ◆ Anti-misplug design for charging port



Basic Functions

- ◆ Aluminum storage flight case for charging & storage
- ◆ Accommodates up to 20 simultaneous interpretation receivers
- ◆ Independent management for each charging port, it will automatically charge the unit with low battery, it will stop charging if the unit is fully charged to ensure the security
- ◆ Independent LED indicators for charging status
- ◆ Charging time: 4 hours
- ◆ GX-20S is suitable for FS-FHSS wireless simultaneous interpretation receivers TC-RFJ04S/08S/12S/16S



Technical Specifications

| | |
|-----------------------|----------------------------|
| Power input | 100-240V, 50-60Hz |
| Capacity | 20 |
| Charging Indicator | LED |
| Dimensions | 590x300x200 mm (W x D x H) |
| Net Weight | 6.65 Kg |
| Operating temperature | 0~45°C |
| Storage temperature | -20~50°C |

Accessories

Monaural Headphone TC-D1

| | |
|-------------------------|---------------------------------|
| Color | Black ring with embedding metal |
| Type | Monaural mono headphone |
| Interface | 3.5mm |
| Impedance | 40Ω±10% |
| Frequency reponse range | 7 Hz - 24KHz |
| Voltage | 0.4V |
| Input power | 8-50mW |
| Distortion rate | <5% |
| Sensitivity | L102dB±3dB |



Stereo Headphone TC-D3

| | |
|-------------------------|------------------|
| Color | Black |
| Type | Stereo headphone |
| Interface | 3.5mm |
| Impedance | 32Ω±15% |
| Frequency reponse range | 20-20KHz |
| Voltage | 0.8V |
| Input power | 30-50mW |
| Distortion rate | <5% |



Interpreter Headset TC-D4

| | |
|-------------------------|----------------|
| Color | Black |
| Type | Stereo headset |
| Interface | 3.5mm |
| Impedance | 32Ω±15% |
| Frequency reponse range | 20 - 20000Hz |
| Voltage | 0.8V |
| Input power | 30-50mW |
| Distortion rate | <1% |



Extension Cable 6PS-03/05/10/15/20

| | |
|--|----------------------|
| Color | Black |
| Type | 6PS |
| Connectors | One male, one female |
| Length | 3/5/10/15/20m |
| Note: Choose in according to the conference demand | |



Extension Cable 8PS-03/05/10/15/20/40

| | |
|--|----------------------|
| Color | Black |
| Type | 8PS |
| Connectors | One male, one female |
| Length | 3/5/10/15/20/40m |
| Note: Select in according to the conference demand | |



Interpreter Cable 25P-3/5/10

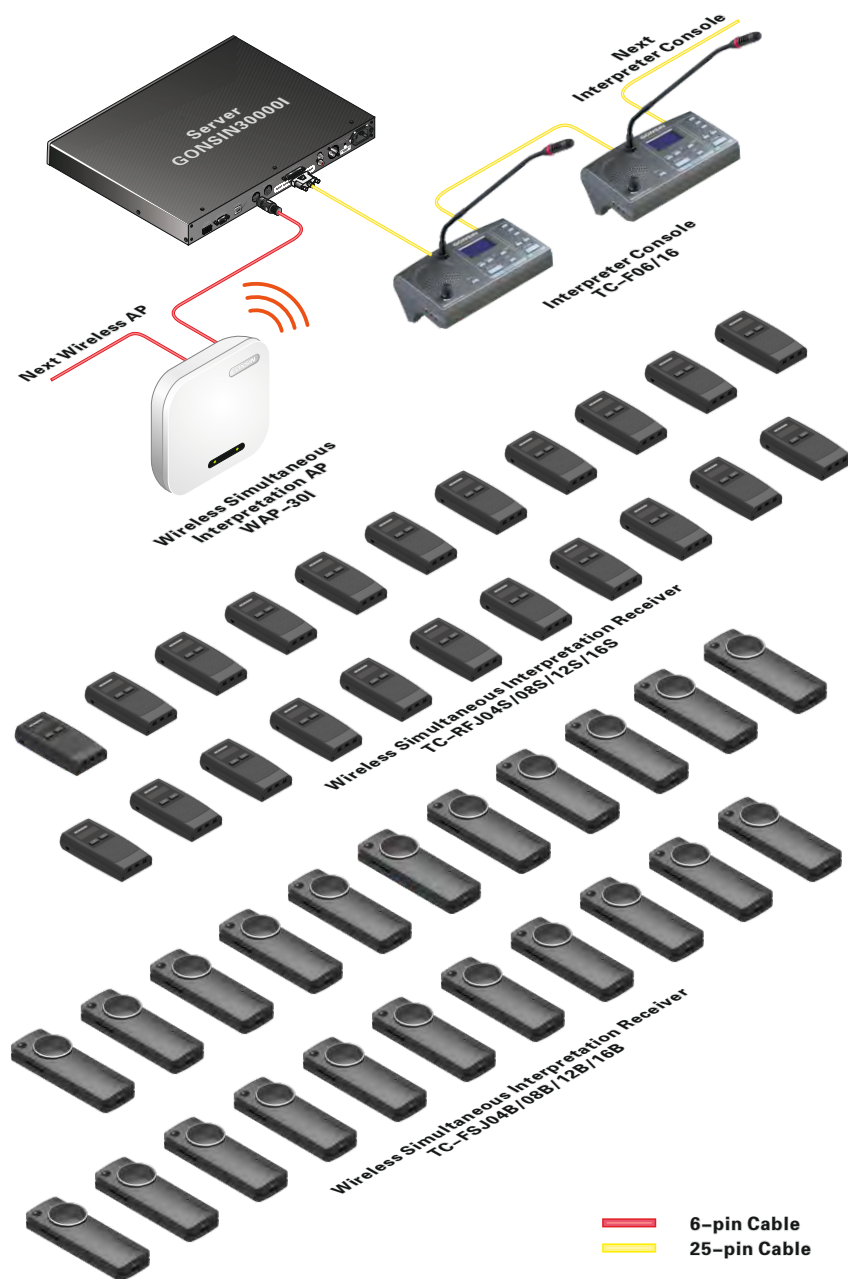
| | |
|--|--------------------------|
| Type | 25P one male, one female |
| Length | 3m/5m/10m |
| Interface | DB25 |
| Note: One 3m and one 10m for one interpreter console | |



System Components

| DESCRIPTION | MODEL | 4 channels | 8 channels | 12 channels | 16 channels | Remark |
|---|---------------------|------------|------------|-------------|-------------|---|
| Server | GONSIN30000I | 1 PCS | 1 PCS | 2PCS | 2PCS | |
| Wireless Simultaneous Interpretation Access Point | WAP-30I | 1 PCS | 1 PCS | 1 PCS | 1 PCS | |
| Simultaneous Interpretation Audio Converter | U-BOX08B | - | - | 1 PCS | 1 PCS | |
| Wireless Simultaneous Interpretation Receiver | TC-FSJ04B/TC-RFJ04S | N | - | - | - | |
| | TC-FSJ08B/TC-RFJ08S | - | N | - | - | |
| | TC-FSJ12B/TC-RFJ12S | - | - | N | - | |
| | TC-FSJ16B/TC-RFJ16S | - | - | - | N | |
| Interpreter Console | TC-F06 | N | - | - | - | |
| | TC-F16 | - | N | N | N | |
| Stereo Headphone | TC-D3 | N | N | N | N | |
| Single Earphone | TC-D1 | N | N | N | N | |
| Interpreter Headset | TC-D4 | N | N | N | N | |
| Charging Case | GX-60C | N | N | N | N | For TC-FSJ04B/08B/12B/16B and each charging case can charge 60 receivers at the same time |
| | GX-20S | N | N | N | N | For TC-RFJ04S/08S/12S/16S and each charging case can charge 20 receivers at the same time |

System Configuration



GONSIN CONFERENCE EQUIPMENT CO.,LTD.
www.gonsin.com



All rights reserved. The information and specifications included are subject to change without prior notice.