

GONSIN®
Delivering Trust & Value

TL-4300

Desktop Digital Conference System

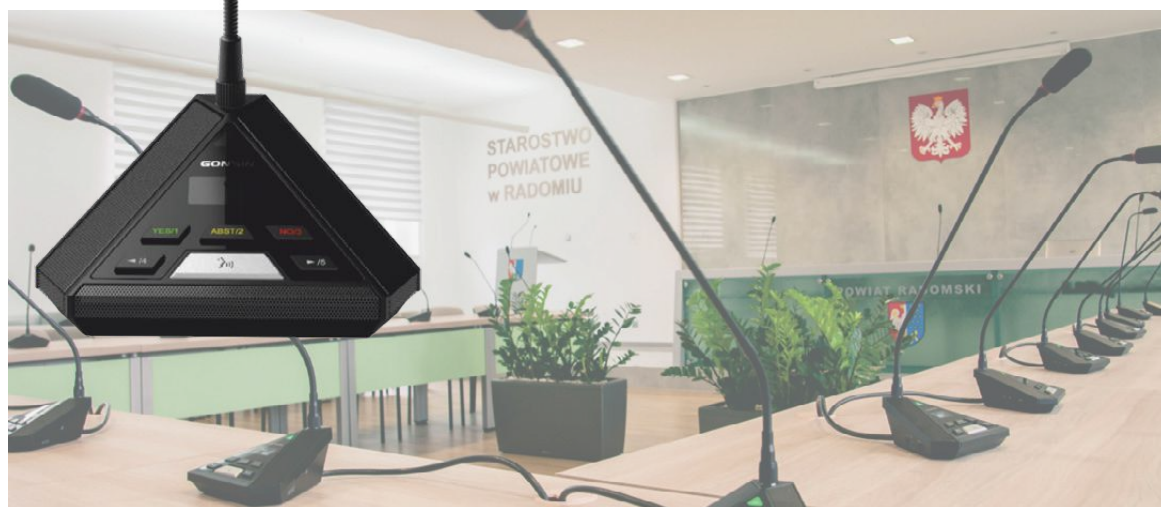


TL-4300 Desktop Digital Conference System

TL-4300 basic discussion unit allows the delegate to speak, request to speak, listen to speech and automatic camera tracking; other units with extended function can support register attendance, cast a vote, election, evaluation, simultaneous interpretation. Each unit comes with headphone jack and volume control for delegates to listen to floor and interpretation audio, and adjust volume level for comfortable listening. Built-in speaker automatically mutes when microphone is turned on. 1 to 4 delegate microphones can be activated at the same time. The system also comes with voice-activated function, under this mode, the microphone will be activated as the users speak. The sensitivity of voice-activated is adjustable, which makes it more user friendly for normal users and the visually impaired people.

Features

- ◆ Trigonometry design, shows sense of modern science and technology
- ◆ Exquisite manufacturing process
- ◆ Voice-activated function
- ◆ Support multiple chairman units and vice chairman units
- ◆ Support 6 channels wired simultaneous interpretation
- ◆ Built-in dual loudspeaker
- ◆ Support auto camera tracking function (SD and HD)
- ◆ OLCD to display the unit status
- ◆ Three-color LED to indicate the unit status (on or off)
- ◆ Built-in clock to display time
- ◆ Electret cardioid directional microphone, rich timbre
- ◆ Pluggable gooseneck microphone stem, red ring illuminant to indicate active mic
- ◆ Highly resistant to mobile phone interference
- ◆ Flexible installation for units connection (hidden or not), makes the assembly room more elegant



Basic Functions

- ◆ In compliance with IEC60914 international standard.
- ◆ Trigonometry design, shows sense of modern science and technology.
- ◆ Three-color LED to indicate the unit status (on or off).
- ◆ Physical Mic button utilizes key-press design, with concise appearance, convenient operation, accurate response and long service life.
- ◆ All the units are daisy-chain connection, reduce project workload, make easy construction.
- ◆ The terminal has hidden connecting cable, which supports hidden or open installation, to make organized table.
- ◆ Automatic restoration function: supports hot plug.
- ◆ Standard electret cardioid microphone with indicating light ring, rich timbre. Several kinds of soft gooseneck microphone stems for various conferences (standard: 410mm, optional: 310mm/510mm).
- ◆ Pluggable gooseneck microphone stem, convenient for equipment maintenance.
- ◆ Highly resistant to mobile phone interference.
- ◆ The sever comes with built-in OLED panel to display clock, unit status, speaking mode, registration, voting, language, volume etc.
- ◆ Display time during the conference.
- ◆ Unique ID number, the conference system supports automatically or manually assigns ID to the corresponding equipment.
- ◆ With headphone jack (Ø 3.5 mm) and adjustable volume (0-9 level) .
- ◆ Built-in MIC (Ø 3.5 mm) to connect with external MIC, which meets the requirements of different usage scenarios.
- ◆ Built-in left and right loudspeakers (2W) and adjustable volume (0-9 level) . Reasonable design makes clear and bright sound.
- ◆ Attendance registration function: by keypress, by numbered card, by un-numbered card, or supplementary registration.
- ◆ Optional HD video camera tracking matrix ,switcher or HD camera, can realize HD automatic camera tracking, supporting preset overall view.
- ◆ 4*1+1 video matrix is built in the Central Control Unit, and standard definition video conference camera is selected, which can realize automatic camera tracking function of standard definition and support preset overall view.
- ◆ Speaking mode: Operator, Auto, FIFO, Operator,VOX, request to speak (with software).
- ◆ VOX function: in VOX mode, the unit will be activated when user speaks; VOX sensitivity can be adjusted (high, middle, low); microphone time-out is adjustable (6-180 seconds).
- ◆ 1-4 delegate unit can be used simultaneously (except chairman unit); chairman/vice chairman unit are not subject to active mic limit, it's allowed to open at any time.
- ◆ The system can have multiple chairman units; delegate unit can be set as vice-chairman units. Numbers of chairman and vice-chairman units are unlimited.

The chairman unit has exclusive functions below:

- ◆ Chairman units can be activated at any time without presetting mic limit
- ◆ Chairman unit has priority key to override all active delegate units



TL-VX4300



TL-VD4300



TL-VXB4300



TL-VDB4300

■ **Based on functions of TL-V4300, TL-VB4300 unit(discussion, voting) has functions below:**

- ◆ Voting: Yes/No/Abstain . Vote counting and result display are enabled automatically by PC
- Single-choice and multiple-choice voting
- First key-press and final key-press voting
- ◆ Election: elect one or more out of N candidates, with 'competitive election', 'equal number election' and 'quick election'
- ◆ Evaluation: 4-key evaluation: Good, Fair, Poor, Abstain.
- ◆ Utilize multi-level error correction and data encryption technique to ensure information security.
- ◆ Customized voting options and voting methods, support customized language mode or display screen

■ **Based on functions of TL-V4300, TL-VC4300 unit (discussion,interpretation) has functions below:**

- ◆ Language interpretation: 1+5 channels.
- ◆ Built-in language channel selector (with headphone plugged in)
- ◆ Acoustic frequency response can up to 20Hz~20KHz.



TL-VDC4300

■ **Based on functions of TL-V4300, TL-VCB4300 unit (discussion,voting, interpretation)has functions below:**

- ◆ Voting: Yes/No/Abstain. Vote counting and result display are enabled automatically by PC
- Single-choice and multiple-choice voting
- First key-press and final key-press voting
- ◆ Election: elect one or more out of N candidates, with 'competitive election', 'equal number election' and 'quick election'
- ◆ 4-key evaluation: Good, Fair, Poor, Abstain.
- ◆ Utilize multi-level error correction and data encryption technique to ensure information security.
- ◆ Customized voting options and voting methods, support customized language mode or display screen
- ◆ Language interpretation: 1+5 channels.
- ◆ Built-in language channel selector (with headphone plugged in)
- ◆ Acoustic frequency response can up to 20Hz~20KHz.



TL-VXCB4300



TL-VDCB4300

Technical Parameters

Installation	Desktop
Connection Method	Specialized 8-pin/13-pin cable
Color	Black
Display Parameter	OLED, Dimension: 35mm×18mm
Frequency Response	20Hz~20KHz
Sensitivity	-46±4dBV/Pa
VOX Sensitivity	H/M/L(76dB/80dB/82dB)
Microphone Time-out	6~180 seconds
Equivalent Noise Level	20dBA (SPL)
Max SPL	125dB(THD<3%)
THD	<0.05%
SNR	≥96dB
Mic Type	Electret cardioid directional microphone
Directivity	0°/180°: >20 dB (1 kHz)
Mic stem length	Standard :410mm; Optional :310mm/510mm
Input Impedance	2KΩ
Headphone/Mic jack	Ø3.5 mm stereo jack×2
Headphone Load	>16Ω
Headphone Volume	10mW
Built-in Loudspeaker	2×2W/8Ω
Interpretation Channel	6
Dimension (L*W*H)	145mm×170mm×71mm (not including mic stem)
Weight	0.6Kg
Power Supply	24V
Max Power Consumption	7W
Operating Temperature	0~45°C
Storage Temperature	-20~50°C

Conference Unit Feature Chart

Model Number	Product Description	Gooseneck Microphone /Card reader	Loud speaker	Voting Facilities	Channel selector	Language	OLED Screen	Installation	Host Configuration
TL-VX4300	Chairman	√	√			Chinese/English	√	Desktop	TL-Z4
TL-VD4300	Delegate	√	√			Chinese/English	√	Desktop	
TL-VXB4300	Chairman	√	√	√		Chinese/English	√	Desktop	TL-ZB4
TL-VDB4300	Delegate	√	√	√		Chinese/English	√	Desktop	
TL-VDC4300	Delegate	√	√		√	Chinese/English	√	Desktop	TC-Z4
TL-VXCB4300	Chairman	√	√	√	√	Chinese/English	√	Desktop	TC-ZB4
TL-VDCB4300	Delegate	√	√	√	√	Chinese/English	√	Desktop	

Central Control Unit



The brand new design GONSIN central control unit adopts integrated tempered glass panel and navigational rotary knob design, clear layout and user-friendly. One central control unit is able to accommodate 60-70 microphones. By cascading extension units, the system can support up to 4096 conference units. The central control unit has built-in 4×1 SD video matrix, to support SD video tracking with adding SD cameras; it also supports extended HD video matrix. Built-in DSP digital audio processor is used for feedback prevention, when the sound environment is not ideal, turn on DSP function to avoid feedback. Built-in treble/bass compensation for better sound quality. VOX sensitivity, built-in loudspeaker volume and LCD screen contrast are adjustable by central control unit or by each unit. Unit ID number writing is also included.

◆ Features

- ◆ Black tempered glass panel design, simple and high-end design. All the function divisions are clearly layout and easy to operate.
- ◆ Built-in DSP processor for acoustic feedback prevention.
- ◆ Built-in OLED screen to display system set status.
- ◆ VOX sensitivity adjustable.
- ◆ Built-in 4×1 SD video matrix, and support extended HD video matrix.
- ◆ Supportive SD and HD camera tracking.
- ◆ Built-in treble/bass compensation for better sound quality.
- ◆ Support clock and calendar function,
- ◆ Support plug-in USB disk for audio recording.

Central Control Unit **TL-Z4**



Basic functions

- ◆ In compliance with IEC60914 international standard
- ◆ With full digital audio technology, built-in high-speed CPU and high-performance DSP digital audio processor, CD sound quality.
- ◆ Acoustic frequency response can up to 20Hz~20KHz.
- ◆ Black tempered glass panel design, simple and high-end design. All the function divisions are clearly layout and easy to operate.
- ◆ The sever comes with built-in OLED panel to display system status, active mic, speaking mode. Language supports Chinese/ English. Russia, Spanish can be customized.
- ◆ Navigation knob for more convenient operation and management
- ◆ 4 route port to connect conference units, the system has auto-repair function, support hot plug-and-play.
- ◆ One central control unit is able to accommodate 60-70 microphones. By cascading extension units, the system can support upto 4096 conference units.
- ◆ Universal voltage power switch for wider usable range and sufficient power supply.
- ◆ Support USB auto recording: after the front panel is inserted U disk, audio recording can be set automatically or manually. The recording status can be displayed in real time.
- ◆ Optional HD video camera tracking matrix ,switcher or HD camera, can realize HD automatic camera tracking, supporting preset overall view
- ◆ 4*1+1 video matrix is built in the Central Control Unit, and standard definition video conference camera is selected, which can realize automatic camera tracking function of standard definition and support preset overall view
- ◆ Input port for external audio signal: for alarm audio, PA, and other audio systems, the conference units can output audio signals synchronously.
- ◆ Internal clock and calendar, it will be displayed on central control unit, conference units.
- ◆ Built-in auto-detection fo conference units; before conferences, self-test can be run for each conference units.
- ◆ TCP/IP PC communication between central control unit and PC, which can achieve control management, remote fault diagnosis and remote update.

Stand-alone Mode Functions:

- ◆ ID number writing: the conference system supports automatically or manually assign ID to the corresponding equipment.
- ◆ All or individual units' VOX sensitivity are adjustable (apply to 5600 series)
- ◆ LCD screen contrast of Unit is adjustable (apply to 4200 series)

- ◆ Speaking mode: Operator, Auto, FIFO, VOX, request to speak (with software).
- ◆ VOX function: in VOX mode, the unit will be activated when user speaks; VOX sensitivity can be adjust by the server (high, middle, low); microphone time-out is adjustable (6-180 seconds).
- ◆ 1-4 delegate unit can be used simultaneously (except chairman unit); chairman/vice chairman unit are not subject to active mic limit, it's allowed to open at any time.
- ◆ The system can have multiple chairman units; delegate unit can be set as vice-chairman units. There are unlimited chairman and vice-chairman units.

■ Extended functions under PC and software control

- ◆ Register function and real-time participants statistics.
- ◆ Centralized conference management, operator can allow or reject delegate request to talk.
- ◆ Speaking time limit can be preset for conference units; After the speaking time is up, the conference unit will be off.
- ◆ Conference audio recording and video recording(need audio video capture card)
- ◆ Delegate unit can be set to be vice-chairman units by software; vice-chairman unit is not subject to active mic limit.
- ◆ Support management software dual-system hot backup function; One control computer can be set as backup and connect to the system; if the current computer has faults, the backup computer can be automatically hosted to ensure the smooth and continuous meeting.
- ◆ Conference management software can be customized.

◆ Central Control Unit

TL-ZB4



◆ Basic functions

■ Based on functions of Central Control Unit TL-Z4, Central Control Unit TL-ZB4 has functions below: Extended functions under PC and software control

- ◆ Voting: Yes, No, Abstain . Vote counting and result display are enabled automatically by PC
 - Single-choice and multiple-choice voting
 - First key-press and final key-press voting
- ◆ Election: elect one or more out of N candidates, with 'competitive election', 'equal number election' and 'quick election'
- ◆ 4-key evaluation: Good, Fair, Poor, Abstain.
- ◆ Utilize multi-level error correction and data encryption technique to ensure information security.
- ◆ Customized voting options and voting methods, support customized language mode or display screen.

Central Control Unit

TC-Z4



Basic functions

- Based on functions of Central Control Unit TL-Z4, Central Control Unit TC-Z4 has functions below:
 - ◆ Language interpretation: 1+5 channels.
 - ◆ Acoustic frequency response can up to 20Hz~20KHz.
 - ◆ With interpreter unit and language distribution port, it can connect Gonsin IR simultaneous interpretation system or FS-FHSS wireless simultaneous interpretation system for compatible use.

Central Control Unit

TC-ZB4



Basic functions

- Extended functions under PC and software control
 - ◆ Voting: Yes, No, Abstain . Vote counting and result display are enabled automatically by PC
 - Single-choice and multiple-choice voting
 - First key-press and final key-press voting
 - ◆ Election: elect one or more out of N candidates, with 'competitive election', 'equal number election' and 'quick election'
 - ◆ 4-key evaluation: Good, Fair, Poor, Abstain.
 - ◆ Utilize multi-level error correction and data encryption technique to ensure information security.
 - ◆ Customized voting options and voting methods, support customized language mode or display screen
 - ◆ Language interpretation: 1+5 channels.
 - ◆ Acoustic frequency response can up to 20Hz~20KHz.
 - ◆ With interpreter unit and language distribution port, it can connect Gonsin IR simultaneous interpretation system or FS-FHSS wireless simultaneous interpretation system for compatible use.

◆ Technical Parameters

Max System Capacity	4096
Standard Capacity	60~70(different from various models)
Acoustic Frequency Response	20Hz~20KHz
SNR	>96dBA
Channel Isolation	>85dB
Dynamic Range	>94dB
THD	<0.05%
Power	AC100~240V 50/60Hz
Audio Port	1 balanced (XLR) 2 unbalanced (RCA)
Max Audio Output	LINE OUT : +20 dBu unbalanced BLANCE OUT : +20 dBu balanced
Output Impedance	>1KΩ
External Audio Input	0.775V (PHOENIX terminal)
Central Control Method	RS-232
PC Connection Method	TCP/IP
Camera Control Method	RS-485
Max Power Consumption	300W
Terminal Connection Port	8-pin×4 13-pin×4 (for TC-Z4,TC-ZB4 only)
Channel selection	6 (for TC-Z4,TC-ZB4 only)
Display Screen	OLED (61mm×37mm)
Audio recording port	USB (USB FAT32)
Audio recording File Size	0.8M/m
Active Delegate	1/2/3/4 (not including chairman unit)
VOX sensitivity	H/M/L (76dB/80dB/82dB)
Support Camera Number	4 SD cameras (built-in SD matrix), MAX 8 cameras with extended matrix
Video Input Port	RCA×4 (1Vp-p 75Ω)
Video Output Port	RCA×2 (1Vp-p 75Ω)
Camera Tracking Protocol	PELCO-P/PELCO-D/VISCA
Operating Temperature	-0~45°C
Storage Temperature	-20~50°C
Dimensions (L*W*H)	485mm×350mm×90mm
Installation	Desktop or 19" rack mounting
Weight	7.6Kg



Extension Unit ZJ-KR



Basic functions

- ◆ Confirm to IEC 60914 international standard.
- ◆ With full digital audio technology, built-in high-speed CPU and high-performance DSP digital audio processor.
- ◆ Black tempered glass panel design, simple and high-end design. All the function divisions are clearly layout and easy to operate.
- ◆ Three routes 8-pin ports to connect conferenc units, another two route 8-pin port for system cascading.
- ◆ Three routes 13-pin ports to connect conferenc units, another two route 13-pin port for system cascading.
- ◆ Automatic restoration function: support hot plug and play.
- ◆ One central control unit is able to accommodate 60~70 units. By cascading extension units, the system can support upto 4096 conference units.
- ◆ Universal voltage power switch for wider usable range and sufficient power supply.

Technical Specifications

Max System Capacity	4096
Standard Capacity	60~70(different from various models)
Power	AC100~240V, 50/60Hz
MAX Power	300W
Terminal Connection Port	8-pin ×5, 13-pin×5
Operating Temperature	0~45°C
Storage Temperature	-20~50°C
Dimensions (L*W*H)	485mm×350mm×90mm
Installation	Desktop or 19" rack mounting
Weight	7.6Kg

GONSIN Digital Conference Management System V7.1.0

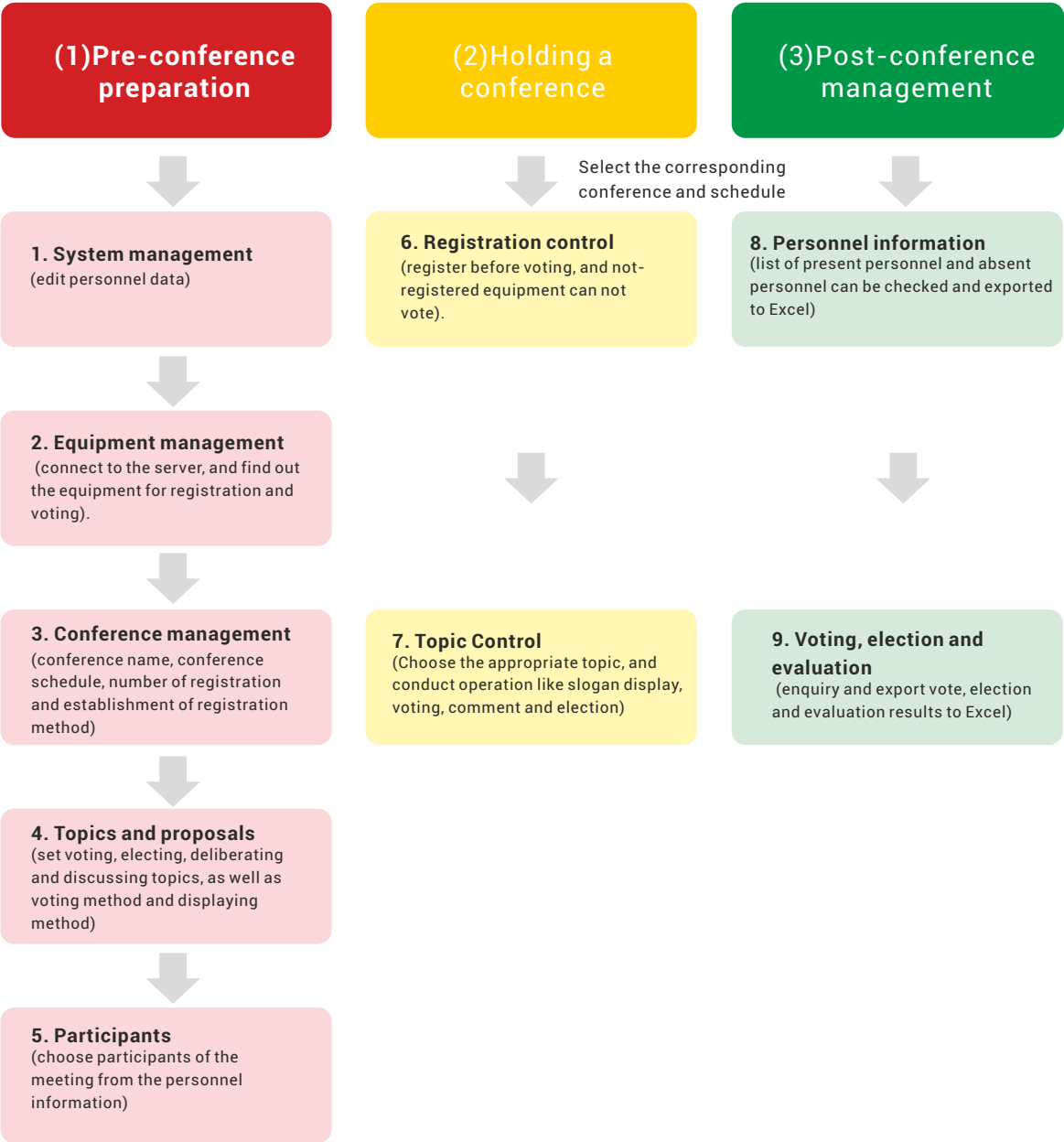
Basic functions

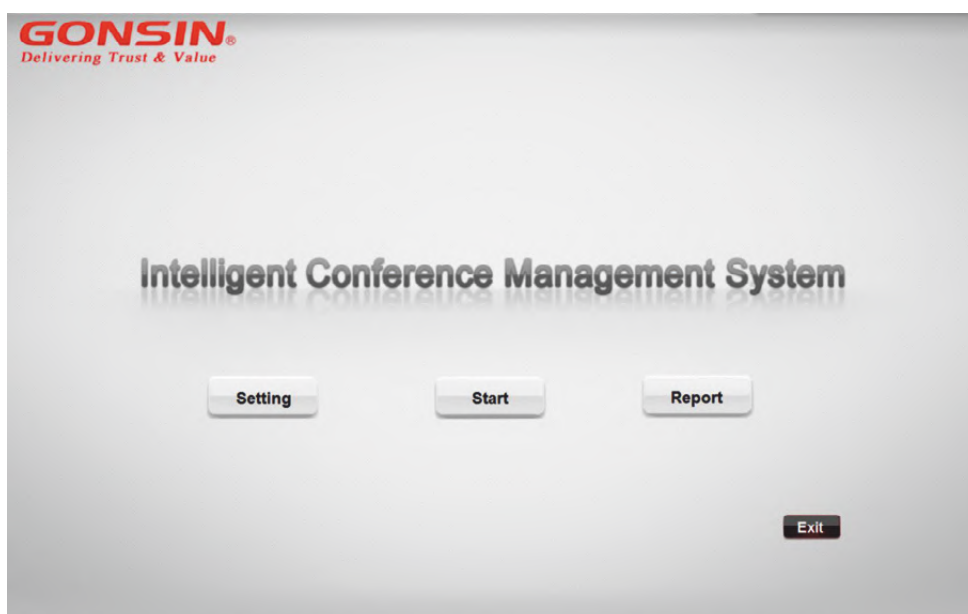
- ◆ It supports main screen and split screen display; the software interface can be synchronized to the large screen; supports screen resolution adaptation.
- ◆ It has abundant functions, and realizes different software module functions when connected to different matching products; software module customization is available.
- ◆ It is compatible with GONSIN's other equipment, so that data is interconnected between wired products/wireless products/multiple product formats/multiple systems
- ◆ It has Super Dog Data Encryption; LicenseOnChip technology ensures that the license can not be tampered; it support AES algorithm encryption. Using ECC key exchange technology to ensure conference data transmission under encryption protection
- ◆ It has serial number authorization function; when super dog encryption is not used, you can use the software by getting the officially granted authorization code.
- ◆ Log in through the user's account and password; level-oriented management, prohibiting external personnel tampering or leaking conference information. Support different user type settings, including operating users, managing users, backup users, etc.
- ◆ Different languages are available, including Chinese, English and Russian. With language customization function, visual language editing interface, easy for translators to edit and proofread; supports language packet import / export.
- ◆ It has equipment management function, and supports online monitoring of system servers and conference equipment. Support centralized management of equipment, realizing equipment power detection, operation status detection , unified shutdown and other operations
- ◆ It supports personnel data input, including name, photo, position, unit number, seat number, custom type and so on. It supports two modes: online creation and offline creation.
- ◆ It supports auto camera tracking settings; you can choose from a variety of camera/matrix types and switch to corresponding control protocol. Preset bit information can be imported and exported, easy to save and invoke.
- ◆ It supports to create new venues or to open existing venues, and set up the venue background map and arrange seats. The seat setting is suitable for all meetings, and can be invoked through the conference schedule.
- ◆ It supports writing card devices for IC card reading and writing. The card writing device is suitable for all meetings.
- ◆ It supports to create conference name and schedule, and a variety of check-in modes are available, including the key-press registration, card registration, and no card registration.
- ◆ You can set conference topics and related content, including slogans, votes, discussions, manuscripts (support office document insertion) and so on.
- ◆ It supports voting, evaluation, election, grading, and fast election; voting options can be customized, and supports the setting of named voting, secret voting, and weight voting; working with paperless system, it will has the multi-topic batch voting function
- ◆ Support screen customization; you can set text font, color, picture and data association in the visual editing interface. Support for fast switching of multiple interface styles
- ◆ Initiate a conference through the software, supporting personnel registration, slogan display, text display, enter the discussion, start voting and other operations
- ◆ The software supports conference microphone control. It can set speech mode, application, number of speakers, speech time, seat display mode and large screen display mode in real time.
- ◆ The software supports post-conference information processing, and the list of conference personnel, the results of topics and proposals, and documents produced during the conference can be exported and printed. It supports uploading historical data from the cloud (only for some supporting products).
- ◆ Support for the tailor-made software development; interface protocol can be opened to achieve customized development according to needs of the project.

Technical Parameter

Operation system	WIN7/WIN8/WIN10 operation system 32/64 bit
Video card	Independent graphics card supports VGA\HDMI\DVI interface, supporting display and split screen.
CPU	i5 or above
Hard disk capacity	500GB or above
memory capacity	4GB or above
PC interface	1 way RS-232 interface; 2 way RJ45 interface
Resolution ratio	adaptive
Video tracking protocol	PELCO-P/PELCO-D/VISCA
PC communication method	Ethernet/RS-232

Function Introduction





◆ **Function Introduction**

According to the conference process, it has three main modules: 【Pre-conference settings】 , 【Holding a conference】 and 【Post-conference management】 . The interface is concise and convenient to operate.

■ **Pre-conference preparation**

Input pre-conference information, including: equipment management, personnel information, camera settings, seating settings, card writing equipment, language settings, conference information, topics and proposals, participants, screen customization, etc.

■ **Hold a conference**

Support sub-screen display and system control during the conference, including: registration management, topics management, discussion control, etc.

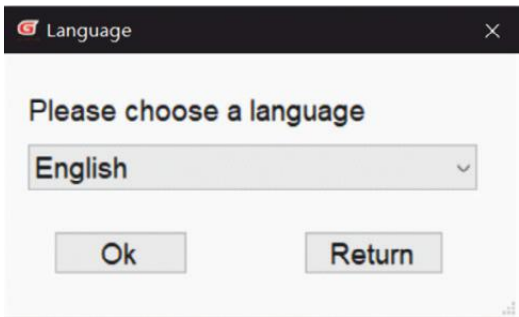
■ **Post-conference management**

Support information processing after the conference, including: personnel information (list statistics, personnel check, number printing, report printing, etc.), voting results (voting, evaluation, election, grading results check and printing).

- Compatible with other equipments of GONSIN system, capable for working with multiple equipment of varied models. Based on network design, it is suitable for use on WIN7/WIN8/WIN10 operating system.

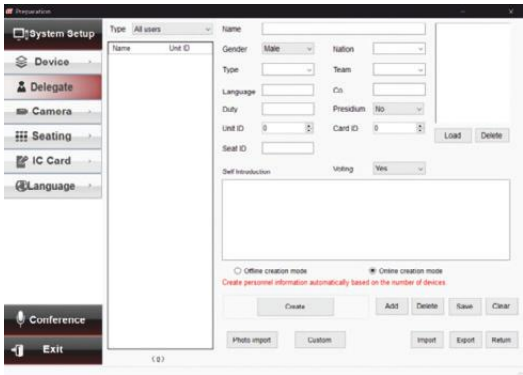
- Use AES algorithm encryption and ECC key exchange technology, ensuring conference data transmission under encryption protection.

System settings

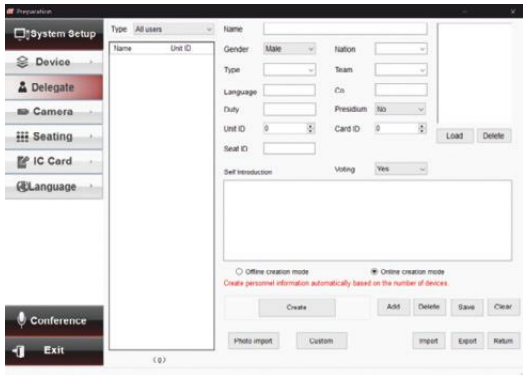


Support multiple languages:
You can choose from Chinese, English and Russian. Through language customization function, you can customize other language interface; it supports for language packet import / export

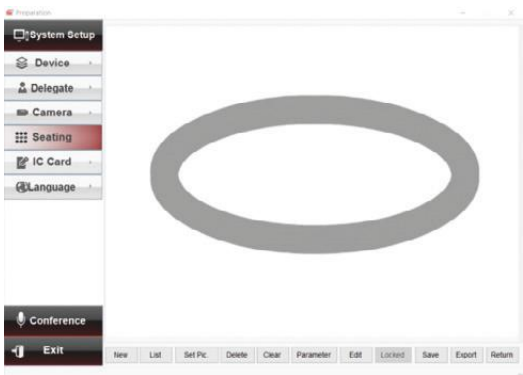
Pre-conference preparation



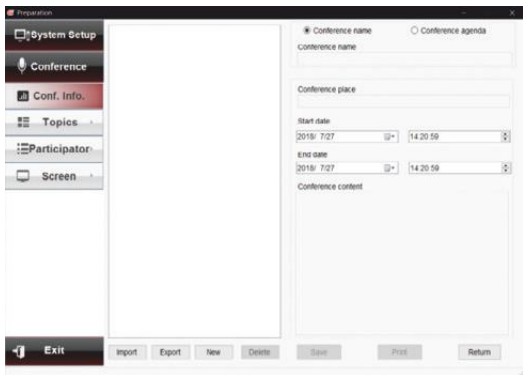
Personnel information:
Input information of participants, including name, photo, position, unit number, seat number, custom type, etc. Support online and offline creation



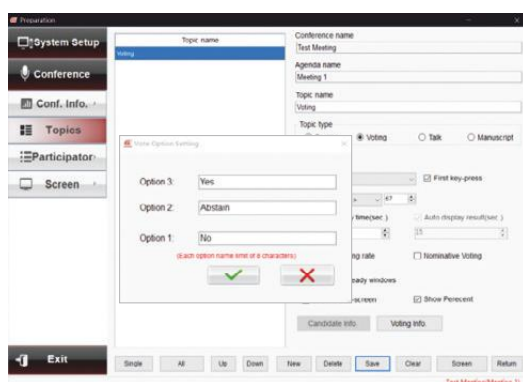
Camera settings:
Set up auto camera tracking of the conference equipment.



Seat setting:
The layout of the equipment is arranged according to the on-site seats, and you can monitor the process of the conference directly.

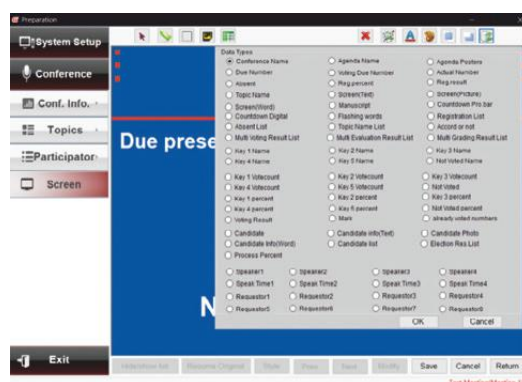


Conference information:
Create or edit conference names and schedules



Topics and proposals:

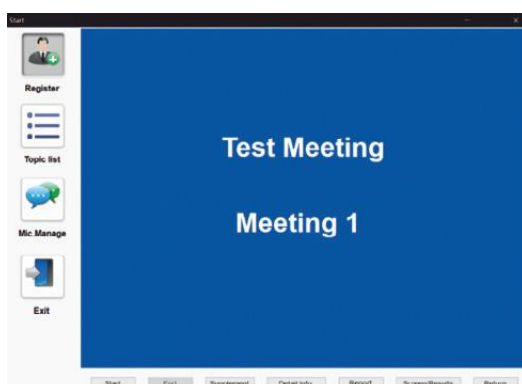
Create or edit topics and proposals. Topics items can be customized. Including slogans, voting, discussion, manuscripts and other settings, more flexible use.



Customizable Screen:

Users can set the relevant contents of the screen display, You can set text font, color, picture and data association in the visual editing interface. Support for fast switching of multiple interface.

Hold a conference



Registration:

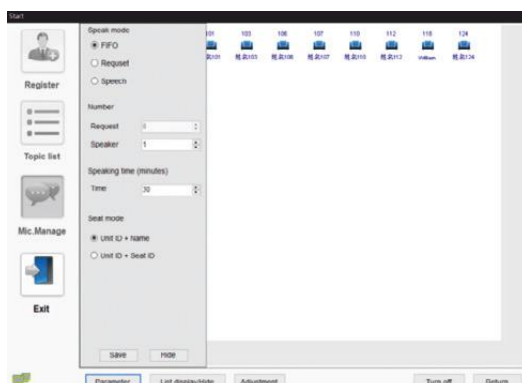
Carry out conference registration function, and support key-press registration, card registration and other registration methods

* some devices do not support card registration



Vote:

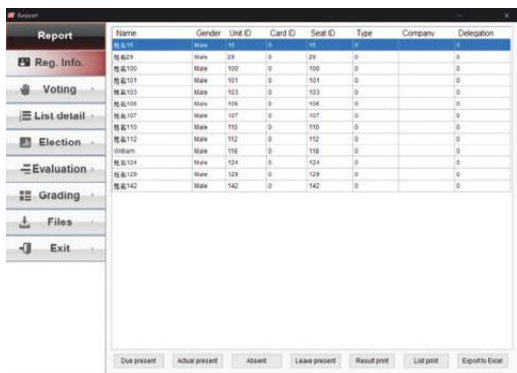
The function of meeting voting can be realized by means of voting, deliberation, election, grading, quick election, and custom voting items.



Discussion:

Speaking parameters can be set in real time, such as speaking mode, application, number of speakers, speaking time, seat display mode and large screen display mode.

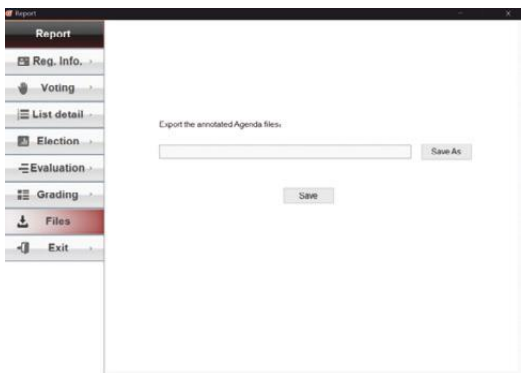
Post-conference Management



The screenshot shows a software window titled 'Report' with a sidebar menu containing options: Reg. info., Voting, List detail, Election, Evaluation, Grading, Files, and Exit. The main area displays a table with the following columns: Name, Gender, Unit ID, Card ID, Seat ID, Type, Company, and Delegation. The table contains 14 rows of data, each representing a participant with their respective details.

Name	Gender	Unit ID	Card ID	Seat ID	Type	Company	Delegation
姓名90	Male	90	9	29	0		0
姓名100	Male	100	0	100	0		0
姓名101	Male	101	0	101	0		0
姓名103	Male	103	0	103	0		0
姓名106	Male	106	0	106	0		0
姓名107	Male	107	0	107	0		0
姓名110	Male	110	0	110	0		0
姓名112	Male	112	0	112	0		0
姓名118	Male	118	0	118	0		0
姓名124	Male	124	0	124	0		0
姓名129	Male	129	0	129	0		0
姓名142	Male	142	0	142	0		0

After the meeting, you can search and print the results of the conference registration, vote, election, appraisal and grading.



The screenshot shows the same 'Report' window with the 'Files' option selected in the sidebar. The main area displays a dialog box titled 'Export the annotated Agenda files.' with a text input field and two buttons: 'Save As' and 'Save'.

It supports post-conference information processing, and you can export and print the list of participants, the results of the topics and proposals, and the documents produced during the meeting. It supports uploading historical data from the cloud (only for some supporting products).



Interpreter Console

TC-F06/16

Interpreter Console is an indispensable part of simultaneous interpretation system, which is used for simultaneous translation of conference speeches by interpreters. When using, the interpreter can only connect the interpreter console with the simultaneous interpreting main control unit / discussion main control unit, and the translated speech can be transmitted to the main control unit through the interpreter unit. Through the processing and transmission by the system, the participants can listen to the speech content of various languages through the receiving unit / discussion unit. There are two types of the interpreter console Interpreter Console, which support 6 to 16 languages simultaneous interpretation.

Basic Functions

- ◆ Support up to 6/16 channels simultaneous interpretation
- ◆ LCD screen can display various information
- ◆ Support direct interpretation and relay interpretation
- ◆ Support dual microphone translation in turn
- ◆ With microphone selection function
- ◆ 3 output volume levels adjustable
- ◆ Interpretation timing function
- ◆ Speaking speed remind function
- ◆ Pluggable dual soft tubes gooseneck microphone stem



Basic Functions

- ◆ In compliance with IEC60914 international standard
- ◆ The design of physical buttons / knobs are sensitive with good touch, with long service life and without mechanical button sound
- ◆ It adopts 25P parallel port (1 male and 1 female) cable for hand-in-hand connection
- ◆ Automatic restoration function: supports hot plug
- ◆ Support 16 channels simultaneous interpretation(including the floor channel)
- ◆ Support direct interpretation and relay interpretation
- ◆ High brightness 128×64 graphic LCD screen with backlight: display setting information ,input and output channel information
- ◆ With channel selection button, it is convenient to select the language from all the input language channels
- ◆ With the indicator of FLOOR/RELAY input channel
- ◆ 3 input channels can be preset with corresponding shortcut button and input channel occupancy indicator
- ◆ 2 output channels can be preset with corresponding shortcut buttons. When all interpreter consoles are closed, the output channel can automatically switch to the floor channel
- ◆ Standard cardioid directional electret microphone with indicator ring; multiple soft gooseneck microphone stems can be selected (standard: 410mm, optional:310mm/510mm)
- ◆ Pluggable microphone stem; During the meeting recess, it can be disassembled for equipment maintenance.

- ◆ Built-in 2W loudspeaker with volume switch; Can play the floor channel or interpreted channel language
- ◆ With the same channel interlock function, when the output channel is preset, the occupied channel will skip automatically.
- ◆ MUTE key to enable a brief muting of the microphone for cough cut
- ◆ Speaking speed remind function, the interpreter can press the "slow" key to remind the speaker to slow down the speaking speed (The microphone's indicator ring or screen will flash)
- ◆ Left and right headphone output jack (3.5 mm×2), connect the headset to listen to the floor or interpreted channel language, with left and right selection buttons; headphone volume is adjustable
- ◆ Left and right microphone input jack (3.5 mm×2), can be connected to external microphone, with left and right selection buttons, to meet different usage scenarios
- ◆ Left and right recording output jack (3.5 mm×2), can be connected to recording device, with left and right selection buttons, the output audio depends on the channel listened by the interpreter console
- ◆ Highly resistant to mobile phone interference
- ◆ Interpretation timing function (timing unit: hour/minute)

Technical Specifications

Installation Way	Desktop
Connection Way	Specialized 25 core connector
	Size: 65mm × 32mm
Display Specifications	Lattice: 128 × 64
	Backlight: blue background white characters
Frequency Range	20Hz~20KHz
Sensitivity	-46 dBV/Pa
Equivalent Noise Level	20dBA(SPL)
Max. SPL	125dB(THD<3%)
THD	<0.05%
SNR	≥96dB
Microphone Type	Cardioid directional electret
Directivity	0°/180°: >20 dB (1 kHz)
MIC Stem Length	410mm (standard); 310mm/510mm (optional)
Input Impedance	2KΩ
Headphone Output Jack	3.5 mm jack×2
Microphone Input Jack	3.5 mm jack×2
Recording Output Jack	3.5 mm jack×2
Headphone Load	>16Ω
Headphone Volume	10mW
Built-in Loudspeaker	2W/8Ω
Channel Number	6/16 channel (including the floor channel)
Power supply	24V
Max. Power Consumption	<5W
Dimensions(L×W×H)	247mm×145mm×95mm(Not including the stem)
Net weight	1.2Kg
Working Temperature	0~45°C
Storage Temperature	-20~50°C

Accessories

Monaural Headphone **TC-D1**

Color	Black ring with embedding metal
Type	Monaural mono headphone
Interface	3.5mm
Impedance	40Ω±10%
Frequency reponse range	7 Hz - 24KHz
Voltage	0.4V
Input power	8-50mW
Distortion rate	<5%
Sensitivity	L102dB±3dB



Stereo Headphone **TC-D3**

Color	Black
Type	Stereo headphone
Interface	3.5mm
Impedance	32Ω±15%
Frequency reponse range	20-20KHz
Voltage	0.8V
Input power	30-50mW
Distortion rate	<5%



Interpreter Headset **TC-D4**

Color	Black
Type	Stereo headset
Interface	3.5mm
Impedance	32Ω±15%
Frequency reponse range	20 - 20000Hz
Voltage	0.8V
Input power	30-50mW
Distortion rate	<1%



IC Card Encoder **SRD-U100**

Support read out and write down information, reset password

Speed	<0.2s
Interface	USB
Installation	Flush-mounting



◆ **IC Card BL7442**

Each card has a unique 32-bit serial number and independent password and access control. Users can set different password with software, one card for appointed conference. Data can be preserved up to 10 years and a card can be rewritten up to 100 thousand times with unlimited reading times.

Dimensions	85.6x53.98x0.8 (LxWxD)
Operating temperature	-20°C to 50°C



◆ **Extension Cable 13PS-03/05/10/15/20**

Color	Black
Type	13PS
Connectors	One male, one female
Length	3/5/10/15/20m
Note: Choose in according to the conference demand	



◆ **Connection Cable 13P-T3**

Color	Black
Type	13PS
Connectors	Two male, one female
Length	1.5+1.2m
Note: For each discussion unit	



◆ **Extension Cable 8PS-03/05/10/15/20/40**

Color	Black
Type	8PS
Connectors	One male, one female
Length	3/5/10/15/20/40m
Note: Select in according to the conference demand	



◆ **Connection Cable 8P-T3**

Color	Black
Type	8PS
Connectors	Two male, one female
Length	1.5+1.2m
Note: one piece for one discussion unit	

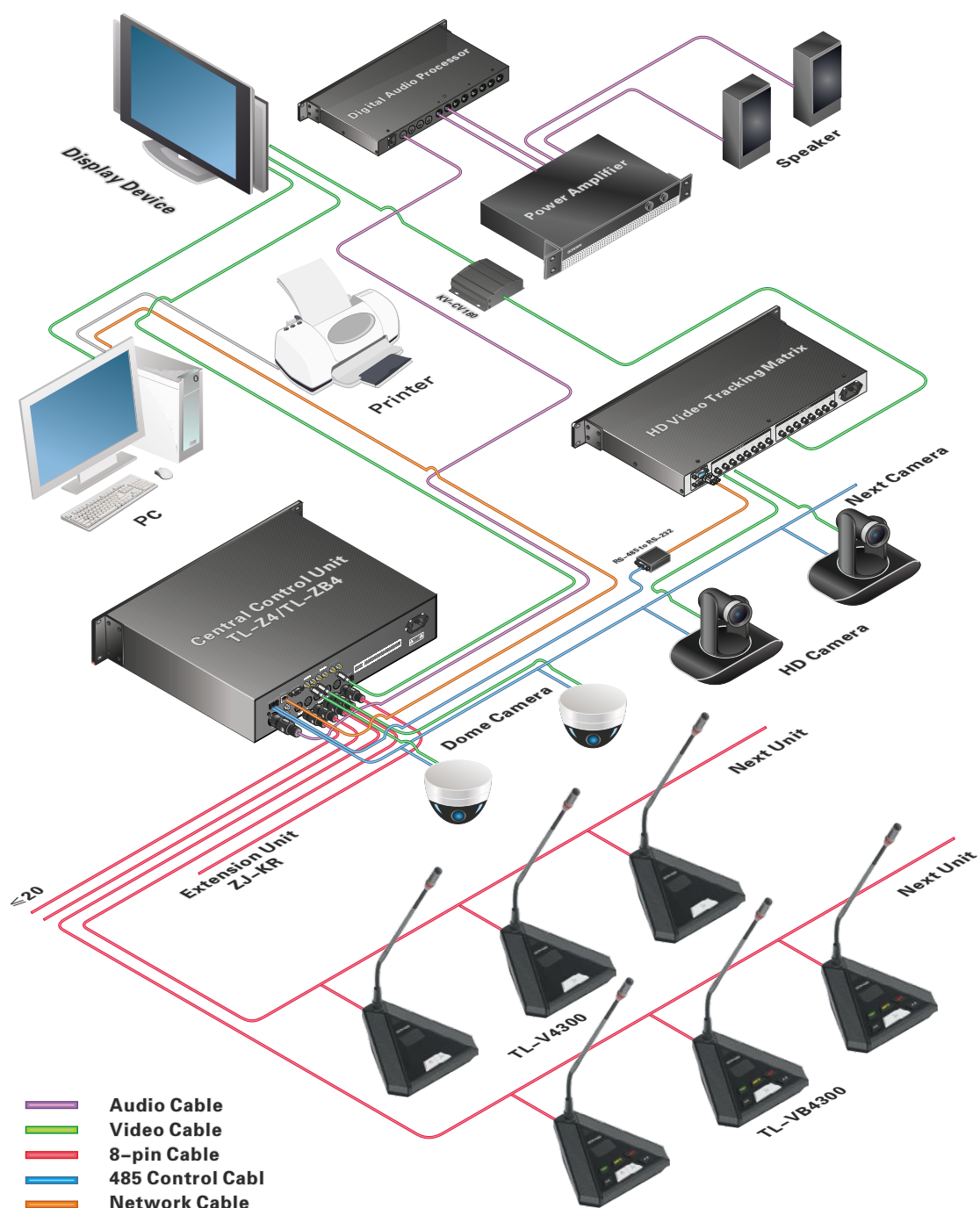


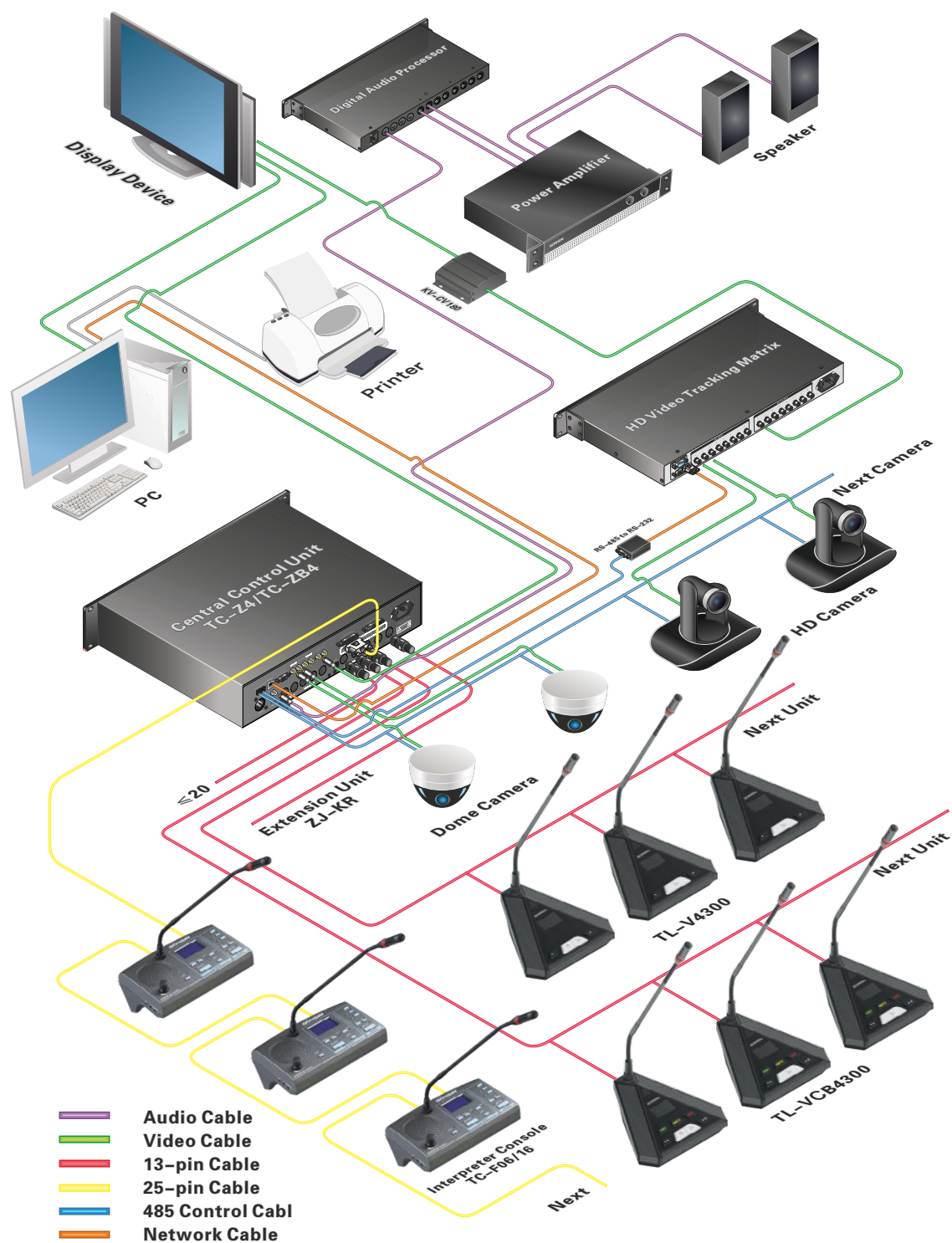
◆ **Interpreter Cable 25P-3/5/10**

Type	25P one male, one female
Length	3m/5m/10m
Interface	DB25
Note: One 3m and one 10m for one interpreter console	



System Configuration





System Components

Model Number	TL-V4300	TL-VC4300	TL-VB4300	TL-VCB4300
Central Control Unit	TL-Z4	TC-Z4	TL-ZB4	TC-ZB4
Extension Unit	ZJ- KR	ZJ- KR	ZJ- KR	ZJ- KR
Chairman Unit	TL-VX4300	TL-VXCB4300	TL-VXB4300	TL-VXCB4300
Delegate Unit	TL-VD4300	TL-VDC4300	TL-VDB4300	TL-VDCB4300
Interpreter Console		TC-F06		TC-F06
Interpreter Headset		TC-D4		TC-D4
Headphone		TC-D3		TC-D3
Management Software	V7.1.0 (optional)	V7.1.0 (optional)	V7.1.0	V7.1.0
IC Card Encoder			SRD-U100	SRD-U100
IC Card			BL7442	BL7442
T-type connection cable	8P-T3	13P-T3	8P-T3	13P-T3
Extension cable	8PS	13PS	8PS	13PS

GONSIN CONFERENCE EQUIPMENT CO.,LTD.
www.gonsin.com



English WeChat



All rights reserved. The information and specifications included are subject to change without prior notice.